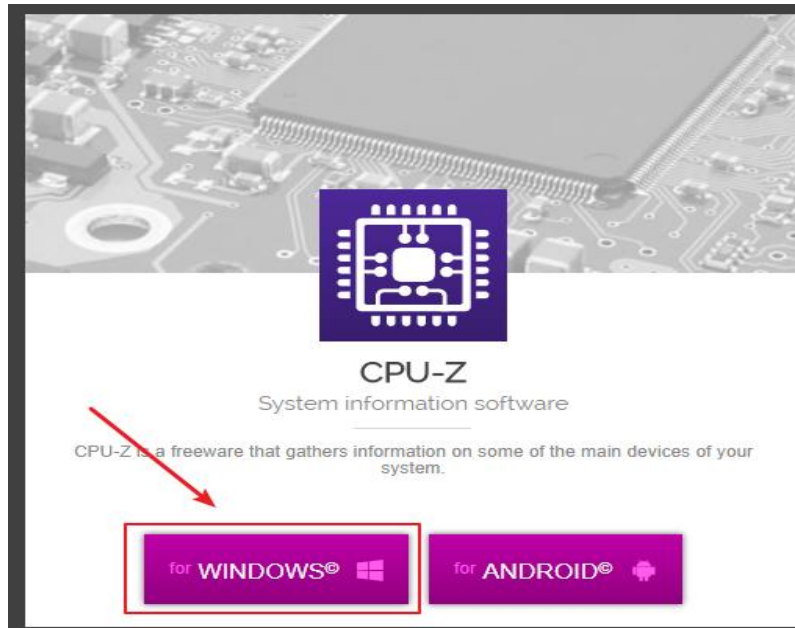


## Dual-channel memory architecture

You could check if your computer whether or not set up dual-channel memory architecture by below steps:

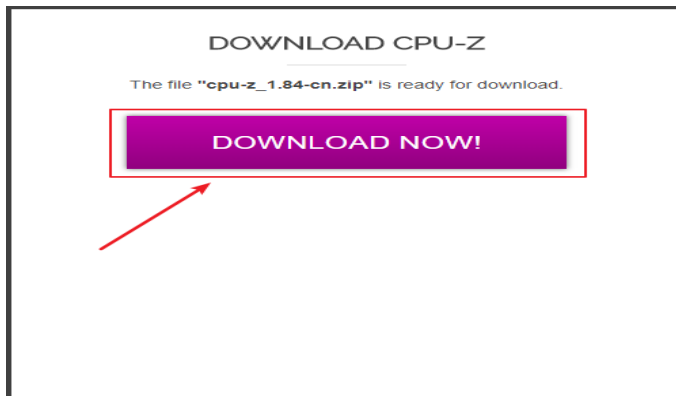
1. install the software “CPU-Z” (URL: <https://www.cpuid.com/> )
2. select “for Windows”



3. select language



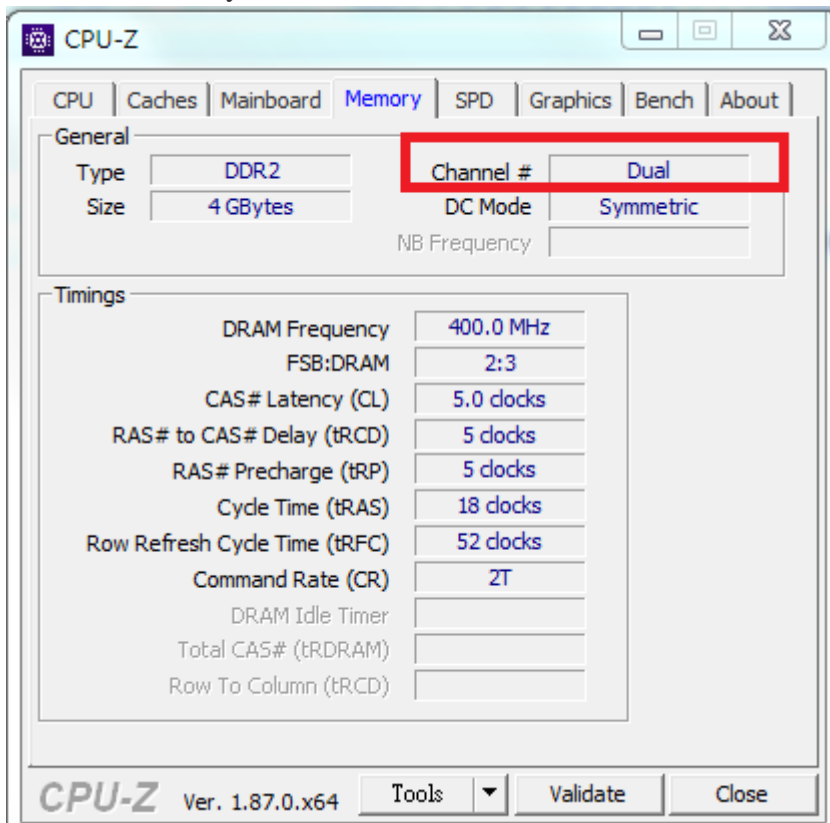
4. select “download now”



5. select your CPU (32 bit or 64 bit)

名称	修改日期	类型	大小
cpuз.ini	2018/3/19 17:17	配置设置	1 KB
cpuз_readme_cn.txt	2018/3/19 17:20	文本文档	28 KB
cpuз_x32.exe	2018/3/20 22:12	应用程序	2,967 KB
cpuз_x64.exe	2018/3/20 22:12	应用程序	3,464 KB

6. select memory



If your channel doesn't show “dual”, we would recommend refer your product manual of your motherboard.